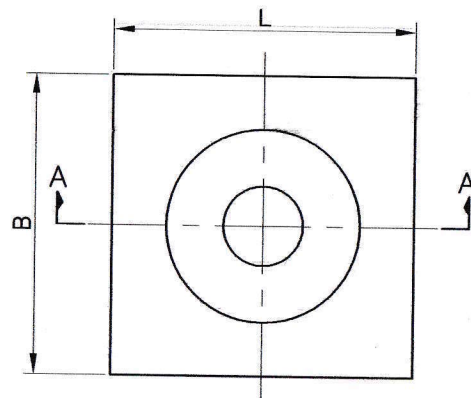


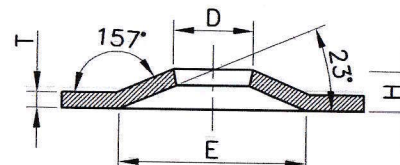
NOTE:-

THE ROCK BOLT HAS TO CONFORM TO DGMS CIRCULAR NO. DGMS/S&T/TECH.CIR (APPROVAL) NO.-11, DATED 17-07-2009

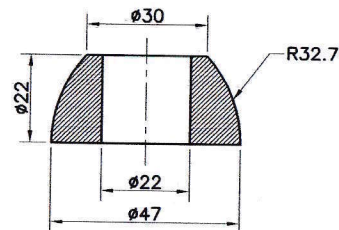
Rock Bolt (Threaded Type) With-
HEXAGUNSA L NUT \leq 30mm and conform
to IS 4218sq. M.S. Washer



PLAN VIEW



SECTIONAL VIEW AA'



DRAWING OF CONVEX SEAT
FOR ROOF BOLT AS PER DGMS

SCALE-2:1

NOTE:-

1. CONICAL SEAT SHALL BE FORGED STEEL AND SHALL NOT BE DEFORM AT 30T OF LOAD

SL NO.	SIZE	ϕA	WT. IN Kg
1	M20	22	0.17

****DIMENSION:-**

L=150
B=150
T=8
H=20
D=36
E=93
M.S.Flat Weight
(k) = 1.38 (Approx)
(All dimensions are in mm)
Load= 30 Ton Min.

****FOLLOWED STANDARD:-**

1. Mass: kg/M for 150X8mm as per IS: 1730 (Table 9)= 9.42kg/mtr 150mm= 1.41 kg (Approx)
2. Tolerances in dimensions/weight as per IS:852 (clause:6)
3. Tolerances for forgings applied as per IS:3469 (pt I to III), apart from IS:1852
4. BS: 7861 as per DGMS

Calculation of Finish Weight

1. Mass of M.S.flat : 1.41 kg Approx
Less mass of hole : (-)0.06 kg Approx
Approx RM 1.35 kg Approx

Note:- Mass Tolerance + as per IS:1852 & forging deviation as per IS: 3469 will be applicable

URANIUM CORPORATION OF INDIA LTD.
(A GOVT. OF INDIA ENTERPRISES)
TURAMDIH MINE

DRN. BY- CHINMOY PANDA		Steel DOMED Washer Plate as per DGMS (S&t)/Technical Circular/No. 3 Dated 03.06.2010		
CHKD. BY- S.C. GHOSH				
APPVD. BY - SAMANTA HEMBRAM				
SCALE- 1:1, 2:1	DATE- 19.11.2021	DRG. NO. UCIL/TMD/M-196/01	REV	01